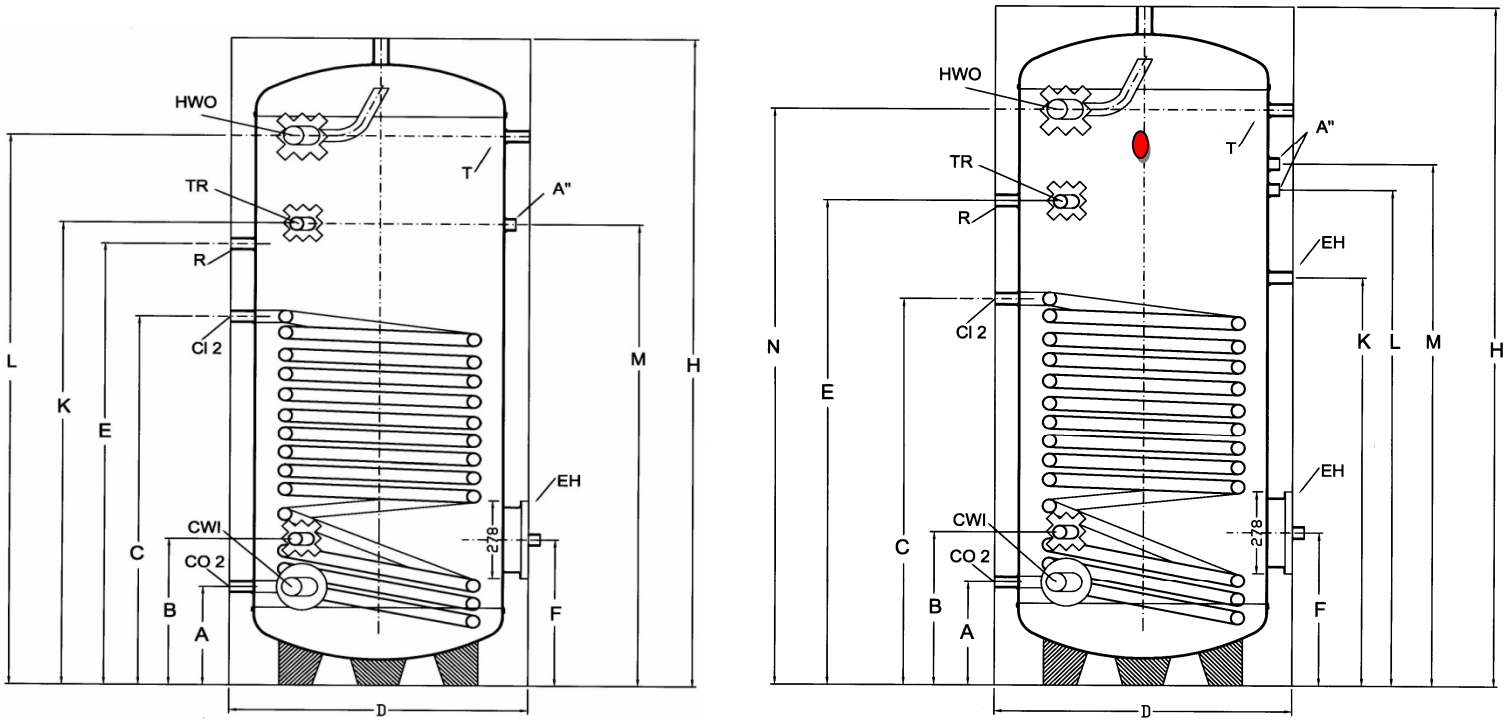




TECHNICAL SPECIFICATIONS SINGLE COIL FLOOR STANDING BOILER



TYPE	750	1000	1500
Code	BLS1-C 750	BLS1-C 1000	BLS1-C 1500
Coil S1 input / outlet	1"	1"	1"
Coil S1 surface m ²	2,0	2,7	3
Recirculation	1"	1"	1"
Cold Water input	1 1/2"	1 1/2"	2 x 1 1/2"
Hot Water outlet	1 1/2"	1 1/2"	2 x 1 1/2"
Tap – Anode	3/4"	3/4"	2 x 1 1/4"
For connection to a boiler of S1 with 90°C and water 10/45°C kW/L/h	75 1769	97 2383	122 2997
A Cold water input CWI	300	330	310
L N Hot water outlet HWO	1630	1710	1965
B Sensor	535	530	510
C Coil S1 Input	970	1080	1160
A Coil S1 Outlet	300	330	310
E Recirculation	1405	1497	1477
F Electric Resistance	450	470	450
M Anode	1435	1580	1640
K K Thermometer/2nd electric resistance socket	1405	1497	1210
E Thermometer	1560	1670	1477
H Total Height	1990	2030	2310
D Diameter	Ø950	Ø1050	Ø1050
F Boiler Cleaning Hole	450	470	450
Operation Pressure / bars	10	10	10
Weight kg	190	230	540

Material: steel sheet

Welding: Automatic metal welding

Protection Coating: High quality glass – Enamel coating and protection anode

Maximum Working Pressure: 10 bar

Maximum water test pressure: 16 bar

Maximum operating temperature: 95°C

Insulation: Polyurethane foam of 100mm thickness

Coil: Steel Tube

Maximum coil test pressure: 25 bar

Electric Heater: By order

Flange: Diameter Ø 278mm

The electric resistance is an extra accessory and is being placed at the cleaning flange.